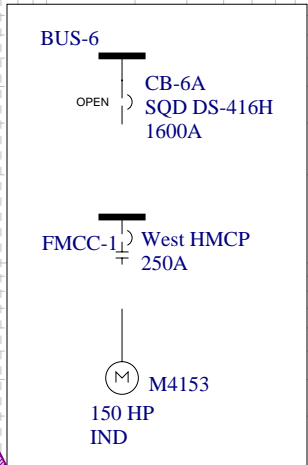
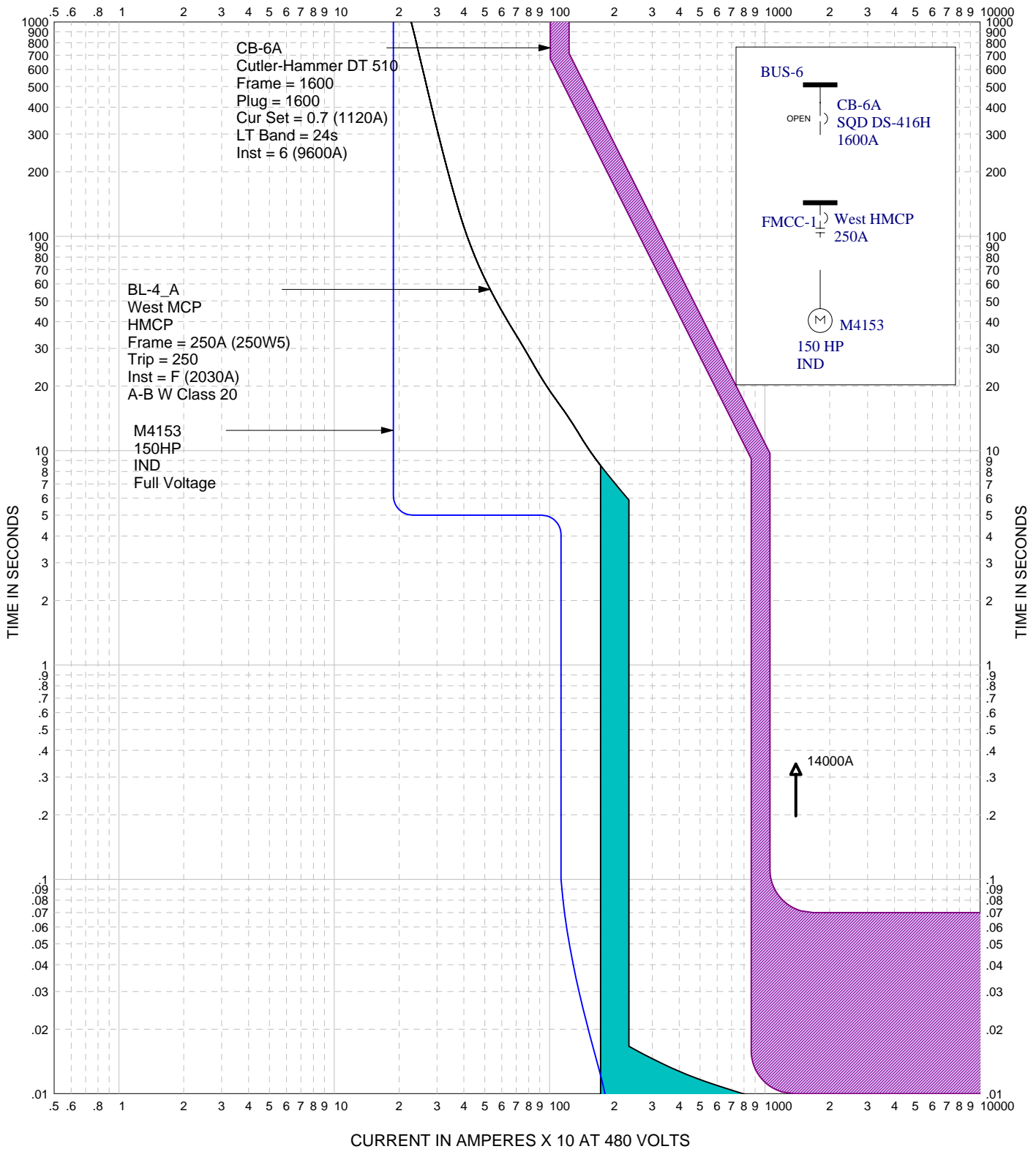


CURRENT IN AMPERES X 10 AT 480 VOLTS



THOR Engineering, LLC

EasyPower[®]
TIME-CURRENT CURVES

TCC-1

This curve illustrates a properly coordinated system. The arc flash current is represented by the small vertical arrow (14,000 Amps). The arc flash current is in the instantaneous portion of the main breaker curve and will clear within .07 seconds, thus reducing the Arc Flash PPE level to #1.

FAULT:
DATE: Nov 01, 2004
BY: MJG
REVISION: 1